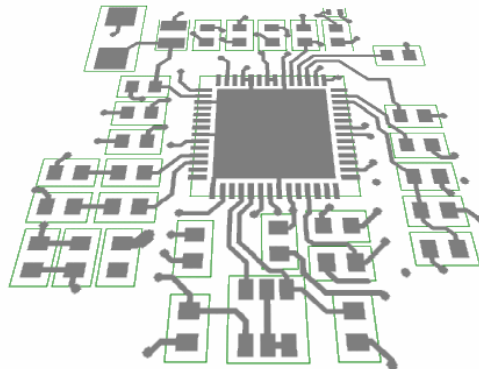


5979 NW 151st Street, Unit# 238
 Miami Lakes, Florida 33014-2434
P:(305) 428-0930 **F:**(305) 230-1255
email: info@enerteksystems.com



www.enerteksystems.com

Visit our website for additional information

• test engineering • components engineering • embedded design • mechanical design

About Us:

Enertek Systems was founded in 2003 as an engineering consulting firm. Our capabilities are diverse and encompass all engineering disciplines. Our overall combined experience spans to 40+ years, with a very active involvement in the design, development and support of medical devices. From the beginning, our intent and focus has been: **To provide turn-key engineering services which truly complement the needs of our clients.**

Our Services:

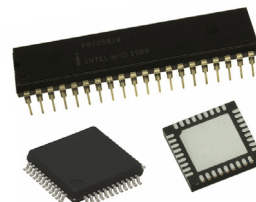
Test Engineering

- Turn-key Functional Test Platform/Fixture Development supporting:
 - Pneumatic/Manual Actuation
 - Bed-of-nails (Wired/Wireless probe) and Connector-Access Test Interface
 - Custom Embedded and PC-based solutions to accomplish key specific functions during manufacturing and/or development, such as In-System Programming (JTAG/ICSP/SWD), Parameter Calibration, and Production/QC Testing of end product.
- Automatic Test Equipment (ATE)
- PC User Interface Development
- Test Platform/Fixture Documentation, Installation and Verification/Validation



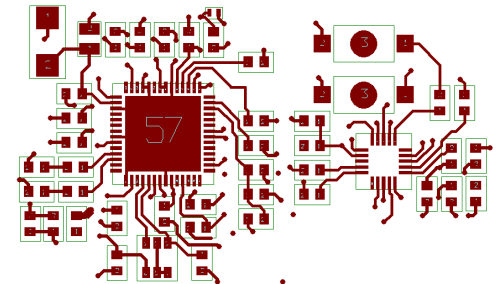
Components Engineering

- Component Obsolescence/end-of-life
- Environmental Compliance (ROHS)
- Alternate Technologies Conversion (TH to SMT)
- Alternate Component Selection/Qualification
- Component Standardization/Cost Reduction



Embedded Systems Development

- Microcontroller-based Solutions (Hardware/Software) supporting:
 - Microchip¹ (PIC10/12/16/18/24,dsPIC)
 - Texas Instruments (MSP430)
 - Atmel (AVR, Nut/OS RTOS)
 - 8051/ARM Derivatives and Others²
- Digital/Analog Circuit Design
- Digital Signal Processing (Audio range)
- Sensor Interfaces
- Communication Interfaces supporting:
 - Serial synchronous/asynchronous (I2C,SPI, RS485/232/422,CAN)
 - USB (Low/Full/Hi-Speed)
 - Ethernet (TCP/IP,UDP)
- Full Schematics and PCB layout (to 12 layers) using Orcad/Allegro
- Compliance Design Documentation and Verification/Validation for regulated markets



¹ Enertek is an approved Design Partner who specializes in designing with Microchip product

² Check website for detailed information on additionally supported platforms

Mechanical Design

- Product and Systems Mechanical Design using Solidworks/Autocad
- Industrial Design
- Rapid Prototyping
- Value Engineering (Manufacturability Optimizations, Cost Reduction)

